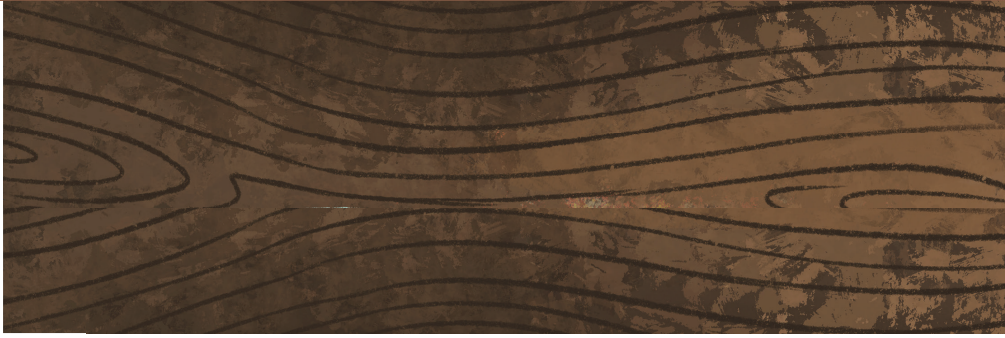
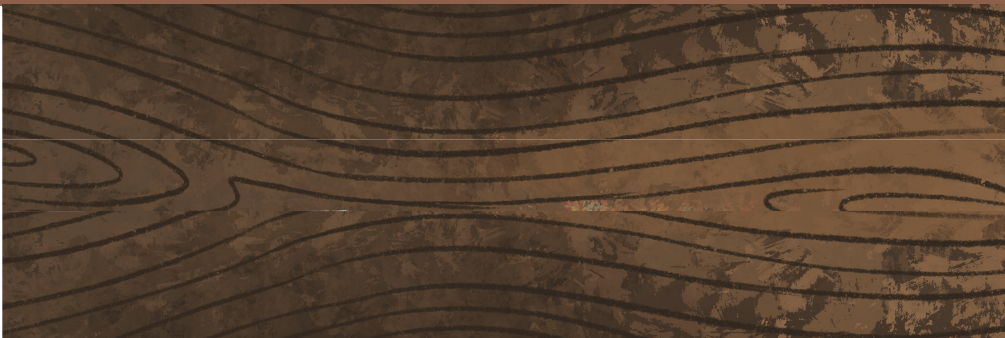


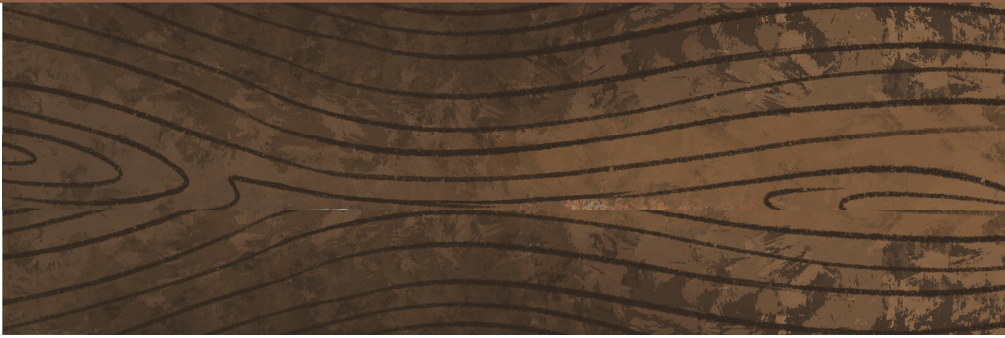
STICK HERE



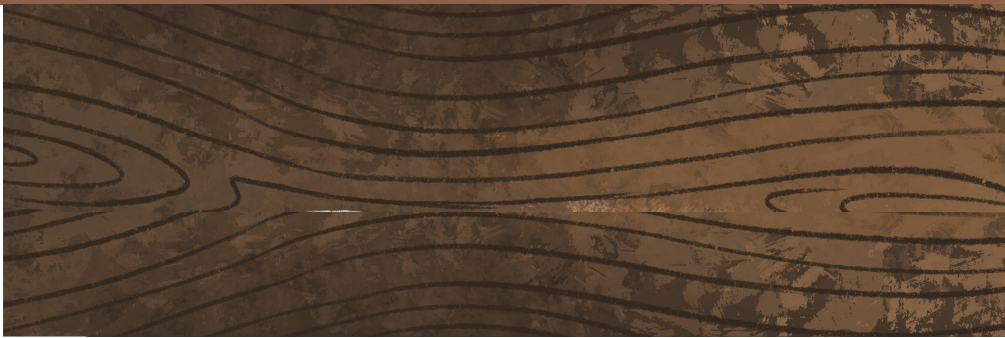
STICK HERE



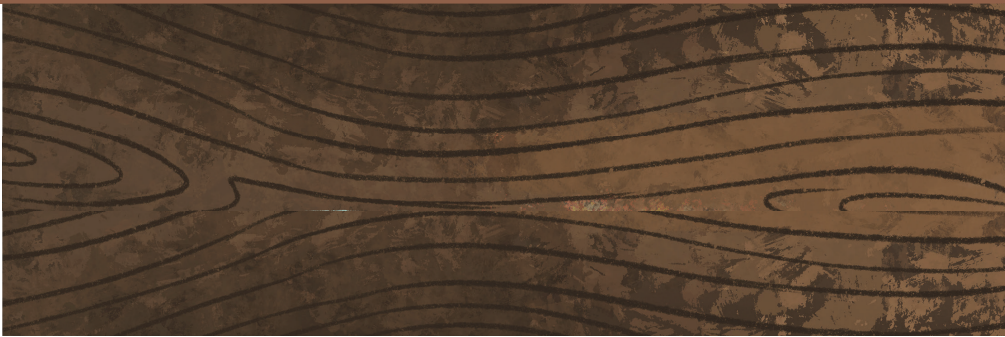
STICK HERE



STICK HERE



STICK HERE



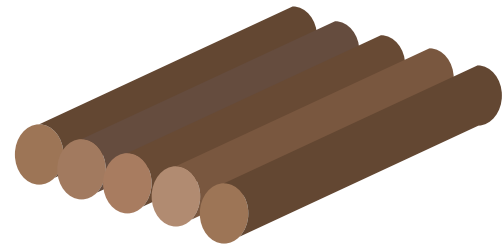
REALLY IMPORTANT RAFT

Quinn's raft helps her get to shore and keeps her safe and dry.

Use the template to create the logs for your raft.

- Cut out each log template
- Use a pen or pencil to help roll it up into a tube
- Secure the end with sellotape or glue
- Attach your logs together by using some string or ribbon

Remember Quinn has to break up her raft to cross the river so you might have to!



BEAR

